



AREA PROFILE 2024/2025

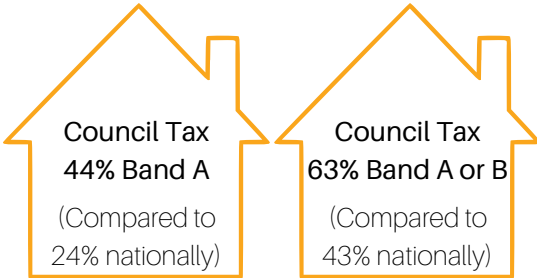
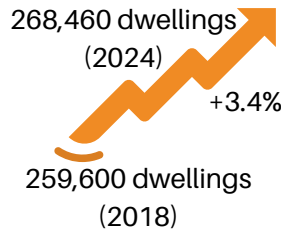


Some dwellings located in close proximity to high hazard industries

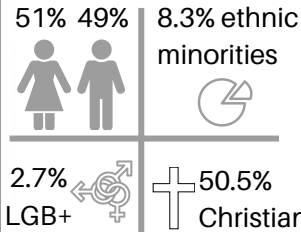


ENVIRONMENT

19.3% of dwellings are rented through private registered providers



COMMUNITY



21.1% of the population are classed as having their day to day activities limited (10% significantly limited)

Population 576,300 (2043) +1.1%

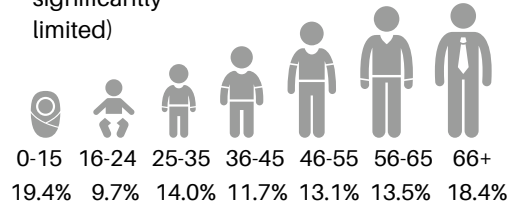
Population 570,000 (2020)



37% of people hold higher education qualifications

8.5% of people hold no formal qualifications

The % of people over the age of 65 will rise by 25% by 2040



96% of people have English as their main language



TEESSIDE INTERNATIONAL AIRPORT

226,557 passengers in 2023
21,125 aircraft movements in 2023



ROAD NETWORKS

2,502km of road networks, mixture of A, B class & other roads, no motorways.



HARTLEPOOL & TEESPORT

Teesport is a major deep-sea complex handling 50 million tonnes per year, the port supports the movement of international imports and exports.



HIGH HAZARD INDUSTRY

We have 26 top tier COMAH sites and a nuclear fueled power station.



2 Battery Energy Storage Sites



5 solar power farms
3 anaerobic digestion plants
5 biomass power stations



5 onshore wind farms
1 offshore wind farm



Wetland conservation area

INDUSTRIAL & COMMERCIAL PREMISES

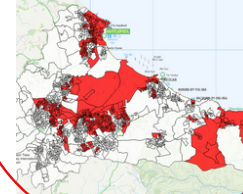


16,717 in our area

ECONOMY



43% of all LSOAs in Cleveland area are within the most 20% deprived in the UK



Over 40% of the population live in LSOAs that are in the 20% most deprived areas nationally

SOCIETY



Crime rate 132 per 1,000 households (England average is 89)



Food parcels distributed have increased by 67% since 2019

Health & life expectancy is significantly worse than the average for England

Children living in low income families
HARTLEPOOL - 18%
MIDDLESBROUGH - 26%
REDCAR - 17%
STOCKTON - 15%